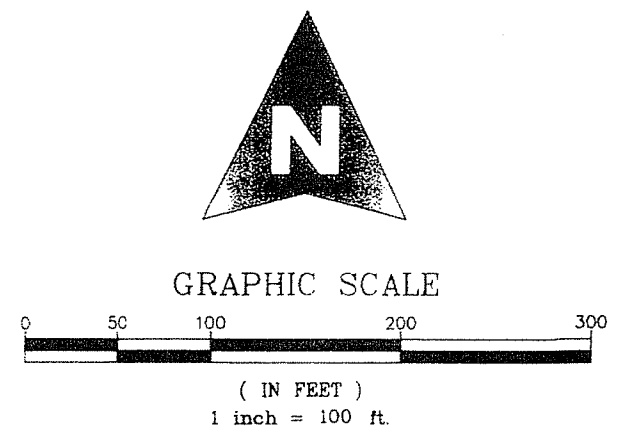


201

ALTON PCD

LYING IN SECTIONS 26 AND 35, TOWNSHIP 41 SOUTH, RANGE 42 EAST,
CITY OF PALM BEACH GARDENS, PALM BEACH COUNTY, FLORIDA.
OCTOBER, 2014 SHEET 5 OF 10



COUNTY OF PALM BEACH)
STATE OF FLORIDA) SS

THIS PLAT WAS FILED FOR RECORD AT _____ M. THIS DAY OF _____ 2014, AND DULY RECORDED IN PLAT BOOK NO. _____ ON PAGE _____ THRU _____

SHARON R. BOCK,
CLERK AND COMPTROLLER

BY: _____, D.C.

TRACT "A"
BENJAMIN SCHOOL
PLAT BOOK 102, PAGES 132-135

TRACT "RW"
P.B. 102, PAGE 132

TRACT "RW"
P.B. 90, PAGE 145

E. LINE OF SECTION 26 ALSO THE E. LINE OF THE SE 1/4 OF SECTION 26, TOWNSHIP 41 S., RANGE 42 E.

TRACT "RW"
P.B. 90, PAGE 145

TRACT "RW"
P.B. 90, PAGE 145

TRACT "RW"
P.B. 90, PAGE 145

TRACT "RW"
P.B. 90, PAGE 145

TRACT "RW"
P.B. 90, PAGE 145

TRACT "RW"
P.B. 90, PAGE 145

TRACT "RW"
P.B. 90, PAGE 145

TRACT "RW"
P.B. 90, PAGE 145

TRACT "RW"
P.B. 90, PAGE 145

TRACT "RW"
P.B. 90, PAGE 145

TRACT "RW"
P.B. 90, PAGE 145

TRACT "RW"
P.B. 90, PAGE 145

TRACT "RW"
P.B. 90, PAGE 145

TRACT "RW"
P.B. 90, PAGE 145

TRACT "RW"
P.B. 90, PAGE 145

TRACT "RW"
P.B. 90, PAGE 145

TRACT "RW"
P.B. 90, PAGE 145

TRACT "RW"
P.B. 90, PAGE 145

TRACT "RW"
P.B. 90, PAGE 145

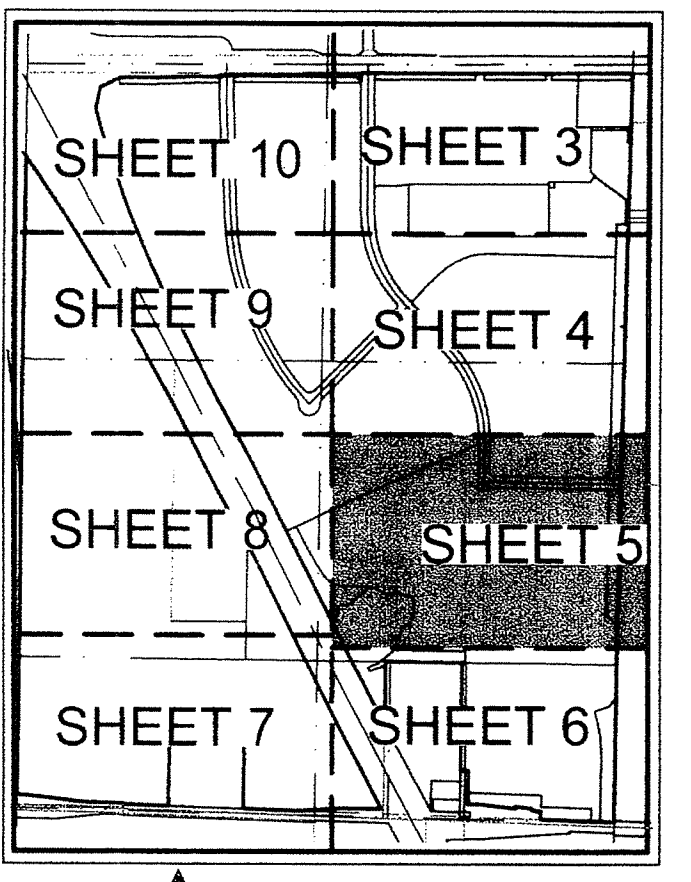
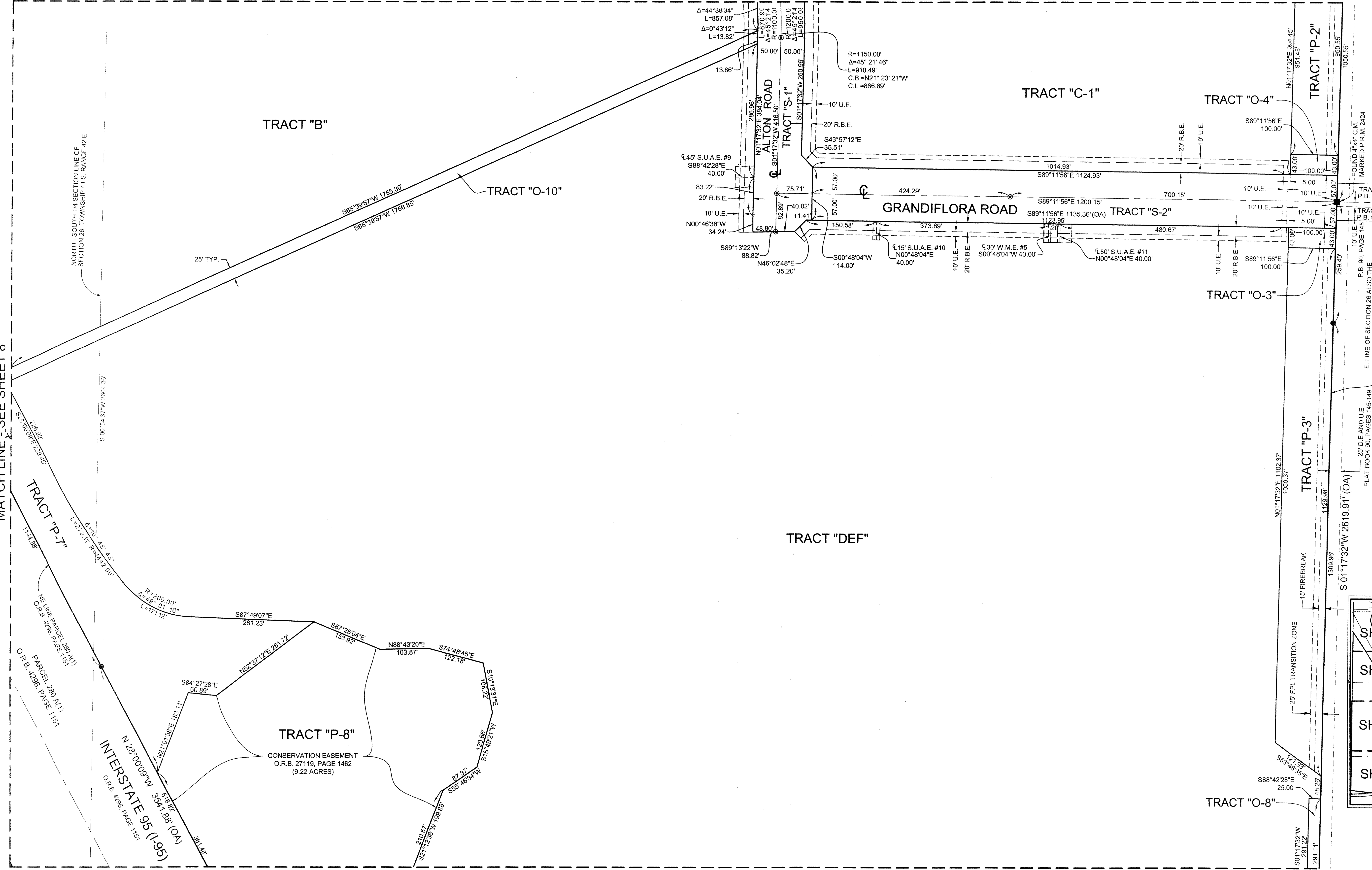
TRACT "RW"
P.B. 90, PAGE 145

TRACT "RW"
P.B. 90, PAGE 145

MATCH LINE-SEE SHEET 4

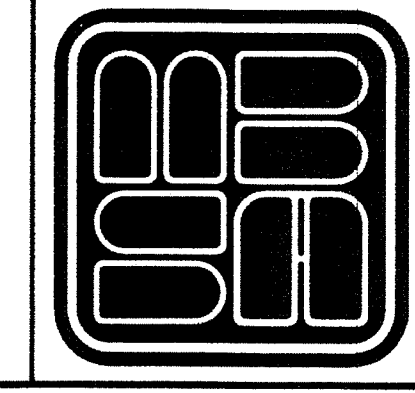
MATCH LINE-SEE SHEET 8

MATCH LINE-SEE SHEET 6



KEY MAP
NOT TO SCALE

SHEET 5 OF 10



MICHAEL B. SCHORAH & ASSOCIATES, INC.
1850 FOREST HILL BLVD., SUITE 206
WEST PALM BEACH, FLORIDA 33406
EB# 2438 TEL. (561) 968-0080 FAX. (561) 642-9726 LB# 2438

ALTON PCD

Z:\9RIGER\1618 (KOLTER-UNIT2)\698-ALTON PCD PLAT.DWG, 11/13/2014 11:11:53 AM, Lsize